

VARIABLE RATE IRRIGATION

PRECISION IRRIGATION FOR MULTIPLE FIELD SCENARIOS.

The control panel features a touchscreen display with the following information:

- START** (green button), **STOP** (red button), **STOP** (red button)
- REVERSE** 211.9° **FORWARD** 1.00°
- 15.0%** **100%**
- 46V** **8/28/2012 3:27:23 PM** **800 Y81**
- NOZZLE PER REV: 103.20** **391" F 31.0 #42** **SAFETY ON**
- RAIN: 0.00" DEW: 0.00" W: 00.00"** **WIND: 0.12MPH 200° S 0081-0229W**
- RECORD ACTIVITY** **TIME REMAINING**
- FLUID: 0.1229MPH TOTAL: 830.421 3218**
- PUMP** **CHEM** **ENDGUN**
- AUX1** **AUX2** **AUX3** **AUX4** **AUX5**
- START** **USB** **SAFETY OVERRIDE** **STOP**
- REINKE** **MORE RIGHT THAN RAIN** **RPM PREFERRED WITH TOUCH TECHNOLOGY**



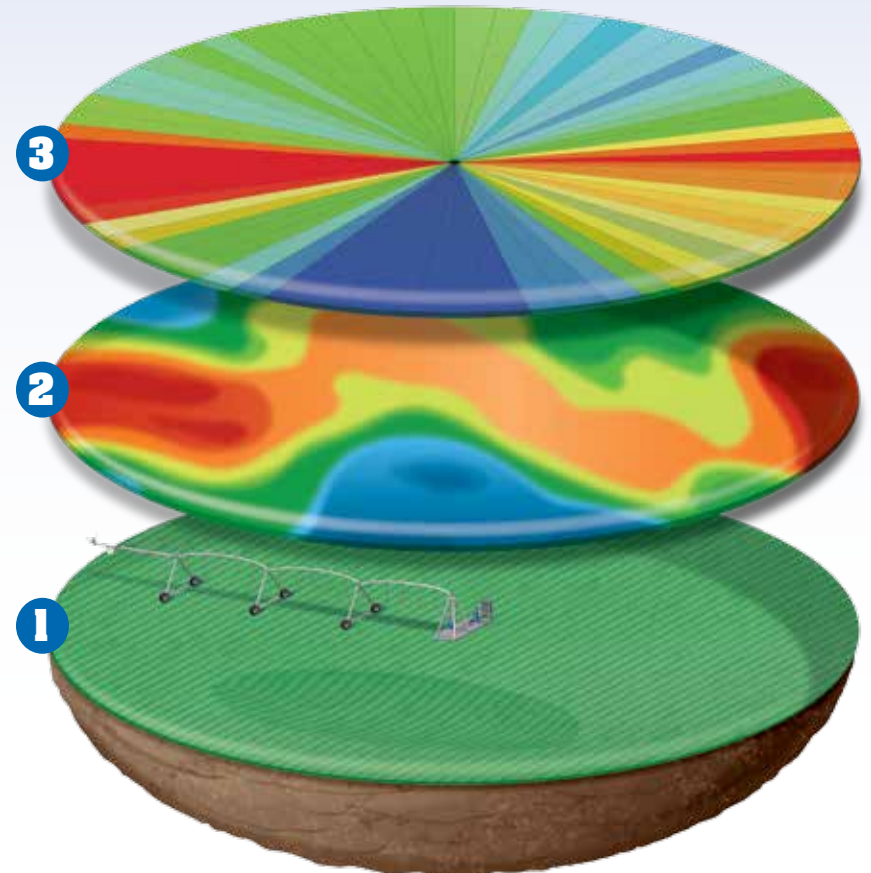
OPTIMIZE WATER DISTRIBUTION. MAXIMIZE EVERY PLANT'S POTENTIAL.

Variable Rate Irrigation (VRI) technology allows for total control of water applied to the field either by varying the system speed or by turning sprinklers on and off to achieve the desired effect.

REINKE VRI PROVIDES PRESCRIPTIONS FOR:

- Soil type
- Slope
- Drainage
- Crop
- Seed Population
- Rain events
- Drought

Whether you have multiple crops in one field, rolling terrain or experience a drought this year, VRI provides you with the ability to have multiple prescriptions for each field. Each prescription precisely matches the unique attributes of your field (soil variables, slope, drainage, etc), crop and changing weather. This allows you to select the prescription that most accurately fits your current irrigation needs that day with the flexibility to easily switch prescriptions if conditions change.

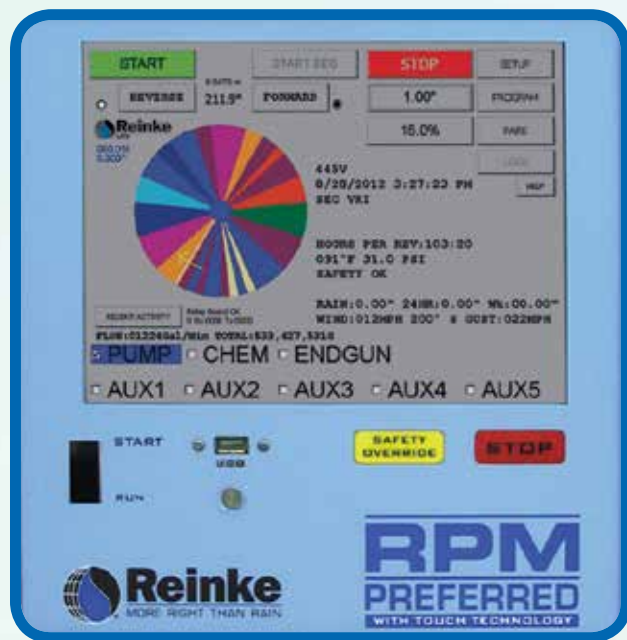


**1. FIELD
VARIABLES**

**2. FIELD SCAN
DATA**

**3. FINAL FIELD
PRESCRIPTION**

Reinke was the first to introduce GPS technology into the control and management of center pivot irrigation systems in 2002. Reinke was also the first to introduce touch screen technology to our line of control panels in 2009. Now Reinke is the first in the industry to integrate variable rate irrigation (VRI) with Touch Screen control and end-of-system GPS. If you already have a Reinke Touch Screen control panel and Navigator GPS, you can get started without any additional components.



OTHER BENEFITS OF THE REINKE SYSTEM:

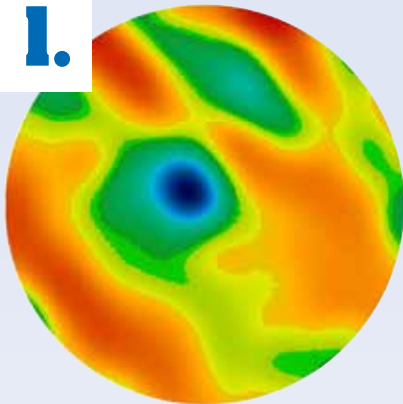
- Full-color display
- Ability to view and select multiple prescriptions
- View the prescription while the pivot is running
- See pivot location within each prescription
- Validate prescription is running as programmed
- Navigator GPS offers unprecedented system location accuracy while providing the best end gun control
- Create prescriptions from multiple sources including aerial images, USDA web soil surveys and yield data



THREE SIMPLE STEPS.

IN JUST A FEW STEPS, YOUR FIELD CHARACTERISTICS GO FROM RAW DATA, TO A FINAL PRESCRIPTION TO RUNNING ON YOUR TOUCH SCREEN CONTROL PANEL.

1.



FIELD SURVEY

First, an electrical conductivity and RTK GPS elevation survey is conducted to determine topography and soil variables. These surveys are available through local independent soil sampling services.

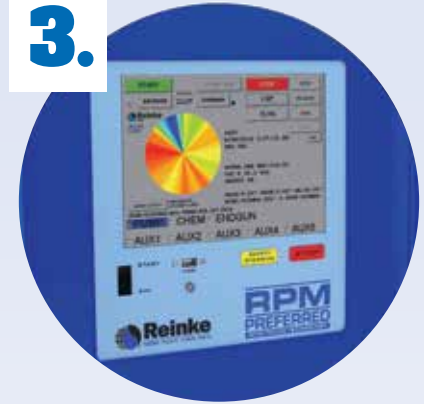
2.



IRRIGATION PRESCRIPTION (Rx)

The raw data is then compiled along with additional crop and field data and processed by data management specialists such as CropMetrics® who are capable of creating multiple irrigation and chemigation prescriptions for the variety of conditions that can occur.

3.



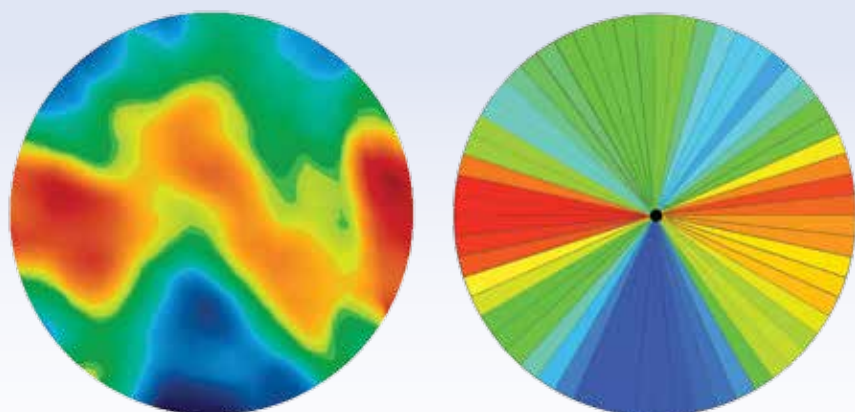
IN-FIELD DOWNLOAD YOU CAN SEE

The new Rx is loaded from a USB drive, the base water depth is set and you're ready to go. There's no guessing involved because the Rx is always visible on your Reinke Touch Screen control panel assuring you everything is performing properly.

TWO PRESCRIPTION METHODS.

LEVEL 1: SECTOR VRI

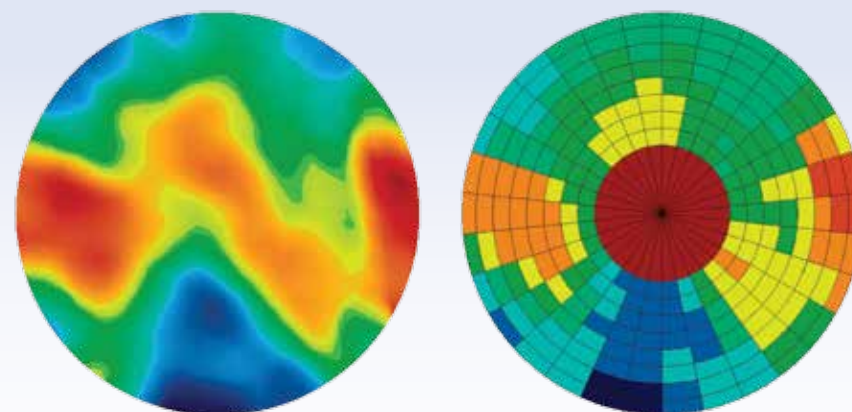
SLICE THE CENTER PIVOT PIE.



Sector VRI irrigation is accomplished by segmenting the pivot path into pie-like slices. Each unique irrigation depth is accomplished by altering the pivot speed. The Rx may concentrate on the outer 30 to 50 percent of the pivot circle, which accounts for 50 to 75 percent of the total area within each slice. Each slice can vary down to two degrees or less than one percent of the total pivot area to provide maximum control of the water being applied. Application depth can be easily adjusted higher or lower without changing the Rx.

LEVEL 2: ZONE VRI

FIND NEW POTENTIAL.



Zone VRI divides the pivot path further for an even higher level of precision. Irrigation rates are achieved through sprinkler banks that can be controlled individually, allowing almost unlimited water application combinations. Variable Frequency Drive Pumps may be required to minimize pressure fluctuations from the changing rate of system flow resulting from turning the sprinklers on and off. Some additional components are required for Zone VRI including independently controlled sprinkler valves and air compressor.

To learn more about benefiting from Reinke VRI, call or visit your Reinke dealer, call our Grower's Hotline (toll-free) at 866-365-7381 or visit www.reinke.com.



Reinke Manufacturing Company, Inc.

National Sales Office
5325 Reinke Road
Deshler, Nebraska 68340

Phone: (402) 365-7251

Grower's hotline (toll-free): 866-365-7381

www.reinke.com

Manufacturing Facilities:

- Deshler, Nebraska
- Belleville, Kansas
- Beijing, China

Warehouse Facilities:

- Deshler, Nebraska
- Amarillo, Texas
- Johannesburg, South Africa
- Bryansk, Russia

Office Locations:

- Deshler, Nebraska
- Beijing, China
- San Luis Potosi, Mexico
- Moshav Korazim, Israel
- Moscow, Russia
- Venado Tuerto, Argentina

